

Přivařovací příruby ploché typ01

PN 10

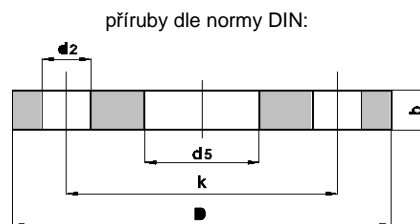
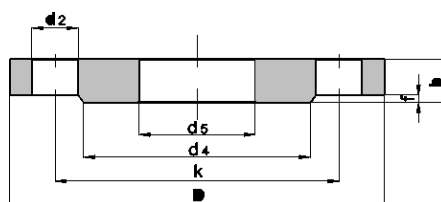
ČSN EN 1092-1

DIN 2576 *reihe 1*

ČSN 131160.0

ČSN 131223.0

DIN 2576 *reihe 2*



| DN | průměr trubky | norma | D | d ₅ | b | k | d ₄ | f | šroubové otvory počet | d ₂ | kg |
|----|---------------|-------------------------|-----|----------------|----|-----|----------------|---|-----------------------|----------------|-------|
| 15 | 21,3 | DIN 2576 <i>reihe 1</i> | 95 | 22 | 14 | 65 | - | - | 4 | 14 | 0,67 |
| | 20 | DIN 2576 <i>reihe 2</i> | 95 | 21 | 14 | 65 | - | - | 4 | 14 | 0,67 |
| | | | | | | | | | | | |
| 20 | 26,9 | DIN 2576 <i>reihe 1</i> | 105 | 27,6 | 16 | 75 | - | - | 4 | 14 | 0,736 |
| | 20 | DIN 2576 <i>reihe 2</i> | 105 | 26 | 16 | 75 | - | - | 4 | 14 | 0,75 |
| | | | | | | | | | | | |
| 25 | 33,7 | DIN 2576 <i>reihe 1</i> | 115 | 34,4 | 16 | 85 | - | - | 4 | 14 | 1,11 |
| | 30 | DIN 2576 <i>reihe 2</i> | 115 | 31 | 16 | 85 | - | - | 4 | 14 | 1,14 |
| | | | | | | | | | | | |
| 32 | 42,4 | DIN 2576 <i>reihe 1</i> | 140 | 43,1 | 16 | 100 | - | - | 4 | 18 | 1,62 |
| | 38 | DIN 2576 <i>reihe 2</i> | 140 | 39 | 16 | 100 | - | - | 4 | 18 | 1,66 |
| | | | | | | | | | | | |
| 40 | 48,3 | DIN 2576 <i>reihe 1</i> | 150 | 49 | 16 | 110 | - | - | 4 | 18 | 1,86 |
| | 44,5 | DIN 2576 <i>reihe 2</i> | 150 | 45,5 | 16 | 110 | - | - | 4 | 18 | 1,89 |
| | | | | | | | | | | | |
| 50 | 60,3 | DIN 2576 <i>reihe 1</i> | 165 | 61,1 | 18 | 125 | - | - | 4 | 18 | 2,47 |
| | 57 | DIN 2576 <i>reihe 2</i> | 165 | 58,1 | 18 | 125 | - | - | 4 | 18 | 2,51 |
| | | | | | | | | | | | |
| 65 | 76,1 | DIN 2576 <i>reihe 1</i> | 185 | 77,1 | 18 | 145 | - | - | 4 | 18 | 3 |
| | | | | | | | | | | | |
| | | | | | | | | | | | |
| 80 | 88,9 | DIN 2576 <i>reihe 1</i> | 200 | 90,3 | 20 | 160 | - | - | 8 | 18 | 3,79 |
| | | | | | | | | | | | |
| | | | | | | | | | | | |

Přivařovací příruby ploché typ01

PN 10

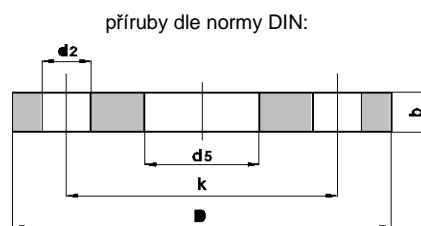
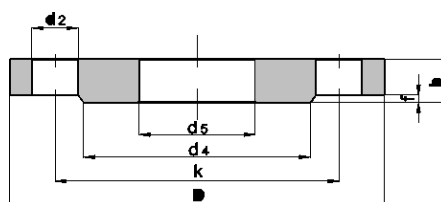
ČSN EN 1092-1

DIN 2576 *reihe 1*

ČSN 131160.0

ČSN 131223.0

DIN 2576 *reihe 2*



| DN | průměr trubky | norma | D | d ₅ | b | k | d ₄ | f | šroubové otvory počet | d ₂ | kg |
|-----|---------------|-------------------------|-----|----------------|----|-----|----------------|---|-----------------------|----------------|------|
| 100 | 114,3 | DIN 2576 <i>reihe 1</i> | 220 | 115,9 | 20 | 180 | - | - | 8 | 18 | 4,03 |
| | 114,3 | ČSN 131160.0 | 220 | 115,5 | 22 | 180 | 158 | 3 | 8 | 18 | 4,29 |
| | 108 | ČSN 131223.0 | 220 | 109 | 22 | 180 | 158 | 3 | 8 | 18 | 4,6 |
| | 108 | DIN 2576 <i>reihe 2</i> | 220 | 109,6 | 20 | 180 | - | - | 8 | 18 | 4,2 |
| 125 | 139,7 | DIN 2576 <i>reihe 1</i> | 250 | 141,6 | 22 | 210 | - | - | 8 | 18 | 5,46 |
| | 139,7 | ČSN 131160.0 | 250 | 141 | 24 | 210 | 184 | 3 | 8 | 18 | 5,75 |
| | 133 | ČSN 131223.0 | 250 | 134 | 24 | 210 | 188 | 3 | 8 | 18 | 6,21 |
| | 133 | DIN 2576 <i>reihe 2</i> | 250 | 134,8 | 22 | 210 | - | - | 8 | 18 | 5,71 |
| 150 | 168,3 | DIN 2576 <i>reihe 1</i> | 285 | 170,5 | 22 | 240 | - | - | 8 | 22 | 6,57 |
| | 168,3 | ČSN 131160.0 | 285 | 169 | 24 | 240 | 212 | 3 | 8 | 22 | 7,05 |
| | 159 | ČSN 131223.0 | 285 | 160 | 24 | 240 | 212 | 3 | 8 | 22 | 7,6 |
| | 159 | DIN 2576 <i>reihe 2</i> | 285 | 161,1 | 22 | 240 | - | - | 8 | 22 | 6,72 |
| 200 | 219,1 | EN 1092-1 | 340 | 221,5 | 24 | 295 | 268 | 3 | 8 | 22 | 9,27 |
| | 219,1 | DIN 2576 <i>reihe 1</i> | 340 | 221,8 | 24 | 295 | - | - | 8 | 22 | 9,31 |
| | 219,1 | ČSN 131160.0 | 340 | 221 | 26 | 295 | 268 | 3 | 8 | 22 | 9,82 |
| | 219 | ČSN 131223.0 | 340 | 221 | 26 | 295 | 268 | 3 | 8 | 22 | 9,7 |
| 250 | 273 | EN 1092-1 | 395 | 276,5 | 26 | 350 | 320 | 3 | 12 | 22 | 11,8 |
| | 273 | DIN 2576 <i>reihe 1</i> | 395 | 276,2 | 26 | 350 | - | - | 12 | 22 | 11,9 |
| | 273 | ČSN 131160.0 | 395 | 275 | 26 | 350 | 320 | 3 | 12 | 22 | 11,8 |
| | 273 | ČSN 131223.0 | 395 | 275 | 26 | 350 | 320 | 3 | 12 | 22 | 11,9 |
| | 267 | DIN 2576 <i>reihe 2</i> | 395 | 270,2 | 26 | 350 | - | - | 12 | 22 | 12,5 |
| 300 | 323,9 | EN 1092-1 | 445 | 327,5 | 26 | 400 | 370 | 4 | 12 | 22 | 13,6 |
| | 323,9 | DIN 2576 <i>reihe 1</i> | 445 | 327,6 | 26 | 400 | - | - | 12 | 22 | 13,8 |
| | 323,9 | ČSN 131160.0 | 445 | 326 | 28 | 400 | 370 | 4 | 12 | 22 | 14,3 |
| | 324 | ČSN 131223.0 | 445 | 326 | 28 | 400 | 370 | 4 | 12 | 22 | 14,6 |
| 350 | 355,6 | EN 1092-1 | 505 | 359,5 | 30 | 460 | 430 | 4 | 16 | 22 | 20,4 |
| | 355,6 | DIN 2576 <i>reihe 1</i> | 505 | 359,7 | 28 | 460 | - | - | 16 | 22 | 20,6 |
| | 355,6 | ČSN 131160.0 | 505 | 358 | 30 | 460 | 430 | 4 | 16 | 22 | 21,7 |
| | 377 | ČSN 131223.0 | 505 | 379 | 30 | 460 | 430 | 4 | 16 | 22 | 18,9 |
| | 368 | DIN 2576 <i>reihe 2</i> | 505 | 372,2 | 28 | 460 | - | - | 16 | 22 | 19 |
| 400 | 406,4 | EN 1092-1 | 565 | 411 | 32 | 515 | 482 | 4 | 16 | 26 | 27,5 |
| | 406,4 | DIN 2576 <i>reihe 1</i> | 565 | 411 | 32 | 515 | - | - | 16 | 26 | 27,9 |
| | 406,4 | ČSN 131160.0 | 565 | 408,5 | 32 | 515 | 482 | 4 | 16 | 26 | 27,8 |
| | 426 | ČSN 131223.0 | 565 | 428 | 32 | 515 | 482 | 4 | 16 | 26 | 24,5 |
| | 419 | DIN 2576 <i>reihe 2</i> | 565 | 423,7 | 32 | 515 | - | - | 16 | 26 | 19 |

Přivařovací příruby ploché typ01

PN 10

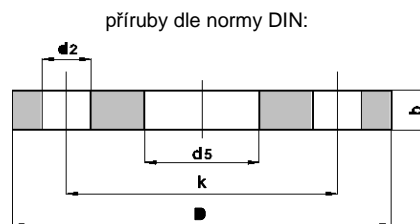
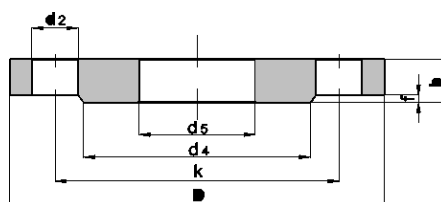
ČSN EN 1092-1

DIN 2576 reihe 1

ČSN 131160.0

ČSN 131223.0

DIN 2576 reihe 2



| DN | průměr trubky | norma | D | d ₅ | b | k | d ₄ | f | šroubové otvory | | kg |
|------|---------------|------------------|------|----------------|----|------|----------------|---|-----------------|----------------|------|
| | | | | | | | | | počet | d ₂ | |
| 450 | 457 | EN 1092-1 | 615 | 462 | 36 | 565 | 532 | 4 | 20 | 26 | 33,6 |
| | 457 | DIN 2576 reihe 1 | 615 | 462,3 | 38 | 565 | - | - | 20 | 26 | 35,6 |
| | | | | | | | | | | | |
| 500 | 508 | EN 1092-1 | 670 | 513,5 | 38 | 620 | 585 | 4 | 20 | 26 | 40,2 |
| | 508 | DIN 2576 reihe 1 | 670 | 513,6 | 38 | 620 | - | - | 20 | 26 | 41,1 |
| | 508 | ČSN 131160.0 | 670 | 510 | 39 | 620 | 585 | 4 | 20 | 26 | 42,6 |
| | 530 | ČSN 131223.0 | 670 | 532 | 34 | 620 | 585 | 4 | 20 | 26 | 31,9 |
| 600 | 610 | EN 1092-1 | 780 | 616,5 | 42 | 725 | 685 | 5 | 20 | 30 | 54,5 |
| | 610 | ČSN 131160.0 | 780 | 613 | 46 | 725 | 685 | 5 | 20 | 30 | 61,5 |
| | 630 | ČSN 131223.0 | 780 | 633 | 36 | 725 | 685 | 5 | 20 | 30 | 37,7 |
| 700 | 711 | EN 1092-1 | 895 | b | 50 | 840 | 800 | 5 | 24 | 30 | - |
| | 711 | ČSN 131160.0 | 895 | 714 | 53 | 840 | 800 | 5 | 24 | 30 | 89,9 |
| | 720 | ČSN 131223.0 | 895 | 723 | 40 | 840 | 800 | 5 | 24 | 30 | 59,8 |
| 800 | 813 | EN 1092-1 | 1015 | b | 56 | 950 | 905 | 5 | 24 | 33 | - |
| | 813 | ČSN 131160.0 | 1015 | 816 | 53 | 950 | 905 | 5 | 24 | 33 | 121 |
| | 820 | ČSN 131223.0 | 1015 | 823 | 44 | 950 | 905 | 5 | 24 | 33 | 88,6 |
| 900 | 914 | EN 1092-1 | 1115 | b | 62 | 1050 | 1005 | 5 | 28 | 33 | - |
| | | | | | | | | | | | |
| | | | | | | | | | | | |
| 1000 | 1016 | EN 1092-1 | 1230 | b | 70 | 1160 | 1110 | 5 | 28 | 36 | - |
| | 1016 | ČSN 131160.0 | 1230 | 1019 | 69 | 1160 | 1110 | 5 | 28 | 36 | 193 |
| | 1020 | ČSN 131223.0 | 1230 | 1023 | 50 | 1160 | 1110 | 5 | 28 | 36 | 132 |
| 1200 | 1220 | EN 1092-1 | 1455 | b | 83 | 1380 | 1330 | 5 | 32 | 39 | - |
| | 1220 | ČSN 131160.0 | 1455 | 1222 | 82 | 1380 | 1330 | 5 | 32 | 39 | 303 |
| | 1220 | ČSN 131223.0 | 1455 | 1223 | 56 | 1380 | 1325 | 5 | 32 | 39 | 197 |

Přivařovací příruby ploché typ01

PN 10

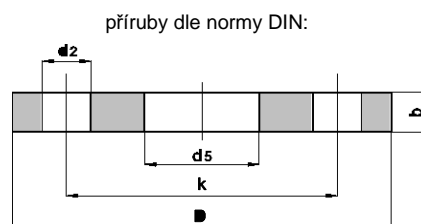
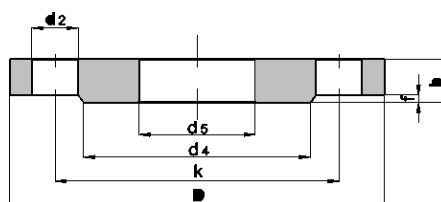
ČSN EN 1092-1

DIN 2576 reihe 1

ČSN 131160.0

ČSN 131223.0

DIN 2576 reihe 2



| DN | průměr trubky | norma | D | d ₅ | b | k | d ₄ | f | šroubové otvory počet | d ₂ | kg |
|------|---------------|--------------|------|----------------|-----|------|----------------|---|-----------------------|----------------|-----|
| 1400 | 1420 | EN 1092-1 | 1675 | b | b | 1590 | 1535 | 5 | 36 | 42 | - |
| | 1420 | ČSN 131160.0 | 1675 | 1425 | 92 | 1590 | 1530 | 5 | 36 | 42 | 428 |
| | 1420 | ČSN 131223.0 | 1675 | 1423 | 62 | 1590 | 1525 | 5 | 36 | 42 | 274 |
| 1600 | 1620 | EN 1092-1 | 1915 | b | b | 1820 | 1760 | 5 | 40 | 48 | - |
| | 1620 | ČSN 131160.0 | 1915 | 1629 | 106 | 1820 | 1750 | 5 | 40 | 48 | 655 |
| | 1620 | ČSN 131223.0 | 1915 | 1623 | 68 | 1820 | 1750 | 5 | 40 | 48 | 390 |

Poznámky:

- u EN1092-1 od DN15-DN40 rozměry stejné jako u PN40
- od DN50-DN150 rozměry stejné jako PN16
- u EN1092-1 od DN700 rozměr d₅ (b) - stanovuje odběratel
- u ČSN se DN15-DN80 nahrazuje PN16